



Title Sponsor



Unlimited Class Sponsor



Unlimited Piston Class Sponsor



CX Class Sponsor



FX/FXV Class Sponsor



St. Maries Chamber of Commerce



Motorsports Consulting Group...

2nd Annual Race the Joe! 2014

Jet Boat Race *sponsored by Dave Smith Motors

May 23, 24 & 25

Racer Package

Hosted by: Dave Smith Motors, St. Maries Chamber of Commerce, St. Maries – St. Joe River Jet Boat Club & Epic Motorsports Consulting Group, L.L.C.

Sanctioned by: American Power Boat Association

With the much appreciated support of: City of St. Maries, Benewah County, Calder, Shoshone County, St. Maries Fire Dept., St. Maries Ambulance, St. Joe EMS, Calder Volunteer Fire Dept., Idaho Dept. of Parks & Recreation & Idaho Dept. of Fish & Game, U.S. Fish & Wildlife Service

Itinerary: All times are Pacific Daylight Savings Time.

The official schedule is subject to change based on weather or other unforeseen circumstances.

Teams may test race boats from IFIL Landing to St. Joe City Bridge through Thursday, May 22

No race boats on the river on Friday, May 23

Teams may use pre-run boats or use family boats ONLY on the racecourse Friday, May 23, 11 a.m. to 4 p.m.

Many have asked "Why can't race boats run on the river for Friday, May 23?"

Here is the answer: The insurance company.

Specialty Insurance Group requires all race clubs to provide the exact same safety conditions as race day 24 hours prior. This requires all safety boats, communications, race officials, ambulance & emergency response volunteers to be on site for Friday. We have a trained group of amazing volunteers already in place for Saturday & Sunday of Memorial Day Weekend.

TUESDAY, MAY 20

7 p.m. Mandatory Race Volunteer Briefing, t-shirt, name badge & wrist band check-in at the Eagles Lodge, 707 Main Ave., St. Maries

THURSDAY, MAY 22

2 p.m. – 4 p.m. APBA & CBF scorers, flaggers & timers training at Idaho Forest Industries Landing
7 p.m. St. Maries Chamber of Commerce Race Team & Jet Boat Committee VIP Welcome at the Eagles Lodge, 707 Main Ave., St. Maries

FRIDAY, MAY 23

11 a.m. – 4 p.m. Pre-run boats or family boats only on the racecourse
2 p.m. – 5 p.m. Registration & Technical Inspection at Cormana Building, 10th & Idaho St., St. Maries
6 p.m. **Mandatory** AVISTA Show & Shine Boat Show! at Lower City Park (next to the Cormana Building, St Maries)
Dusk Fireworks Display at Lower City Park

SATURDAY, MAY 24

(There will be a brief driver's meeting prior to the start of each race leg.)

9 a.m. Driver's Meeting at Aqua Park Boat Ramp, St. Maries
10 a.m. Leg 1, Race Idaho Forest Industries Landing to Calder Bridge (1 minute intervals)
11:30 a.m. Leg 2, Calder Bridge to IFI Landing
2 p.m. Leg 3, IFI Landing to Calder Bridge
3:30 p.m. Leg 4, Calder Bridge to IFI Landing

SUNDAY, MAY 25

9 a.m. Driver's Meeting at Aqua Park Boat Ramp
10 a.m. Leg 5, Race IFI Landing to Calder Bridge
11:30 a.m. Leg 6, Calder Bridge to IFI Landing
2 p.m. Leg 7, IFI Landing to Calder Bridge
3:30 p.m. Leg 8, Calder Bridge to IFI Landing
4:30 p.m. Technical Inspection at Aqua Park
6 p.m. Awards Celebration at the Eagles Lodge **Please purchase tickets at registration.

Events, Registration & Technical Inspection:

The Thursday, May 22nd APBA & CBF joint logistics training is for scorers, timers and flaggers participating in the Race the Joe! 2014 jet boat race. We greatly appreciate the efforts of Linda Doucette and Tim Wilmot of Canada to train the eager members of a new jet boat club and to be on-site assisting with this race. MT Actions Photography, Maurice Trudeau is the Official Photographer for Race the Joe! 2014.

Technical Inspections and Registration will be held on Friday, May 23th from 2 p.m. to 5 p.m. at the Cormana Building, St. Maries.

*Each team must be prepared to pay entry fees, etc. in USD cash or check at registration. Checks are to be made payable to: St. Maries Chamber of Commerce. **We also have the option for teams to pay for registration fees by credit card on May 23 only. There will be an additional 2.75% fee to pay by credit card.

*Each team must first complete its technical inspection and bring this signed form to register on May 23. Teams that complete Early Bird Registration must also complete technical inspection and bring this form to the registration area before 5 p.m. on May 23.

*Each team must show APBA membership card or proof of membership. The option to purchase an APBA membership will be available at registration. Canadian teams may show their CBF card for reciprocity membership.

*Teams must complete signed waivers at registration and wear wristbands for the entire duration of the race. Anyone on your team in the pit areas must sign a waiver and wear a wristband.

*Both the driver & navigator must show signed medical forms from their physician for the 2014-year.

*Each boat must be equipped with all the items required on the "Race Boat Checklist" included with this packet.

EARLY BIRD registration - \$300 per boat. Entry form and ENTRY FEE must be paid prior to May 10 to receive early bird discount. \$450 per boat after May 10. The Entry Form is included in this packet. Mail everything to Kyla Sawyer at the address on the entry form or scan the completed form, email it & mail the check to Kyla.

Each team will receive two (2) parking passes for race team vehicles to enter the hot pit areas. Only civilian vehicles with hot pit parking passes will be allowed to enter these areas. If you require additional parking passes please let us know at registration.

Registrations and entry fees will be accepted up to 1 hour prior to the driver's meeting on May 24. The driver's meeting on May 24 will be held at 9 a.m. at Aqua Park Boat Ramp. Drivers and Navigators must have a valid APBA membership in order to race. APBA memberships or single event memberships are not included in the entry fee.

Tickets to the Awards Celebration will be available at registration. Tickets are not included in the entry fee.

The Show & Shine Boat Show is **mandatory** for all participating race teams. This event begins at 6 p.m. at the Lower City Park field next to the Cormana Building. Thank you for your participation in this fan favorite event! We respectfully suggest you bring sharpie pens to sign autographs. Fans may ask to have their pictures taken with teams. Fans may also ask if they can sit in your boat. We respectfully recommend each team decide how they want to handle fan requests prior to this event.

INVASIVE SPECIES STICKERS:

PLEASE NOTE:

Any boat, both motorized and non-motorized, entering the waters of Idaho is required to contribute to the Idaho Invasive Species Fund (IISF). The Idaho Department of Agriculture is responsible for management of the IISF program. The fees generated from the sale of IISF stickers will fund vessel inspections, washing stations and informational materials that will assist Idaho with preventing the introduction of aquatic invasive species. For more information please go online:

http://www.agri.state.id.us/Categories/Environment/InvasiveSpeciesCouncil/IISF_FAQ.php

Idaho Dept. of Agriculture employees will be at Aqua Park Boat ramp from approximately 10 a.m. to 3 p.m. on May 22 & 23.

Epic Motorsports Consulting Group, LLC is a registered vendor and will have stickers available at St. Maries, May 21 through the race dates.

Please call Kyla Sawyer (208) 890-3868 if you need to purchase stickers prior to registration. Stickers will also be available at registration on May 23. Stickers are not included in the entry fee.

Media:

Media and publicity may be arranged by Media Director, Kyla Sawyer.

All racers participating in filmed interviews please wear your major sponsoring company's hat, etc. Please feel free to contact Kyla (208) 890-3868 for assistance with media or fan requests.

Photography for the Official Race Program was generously donated by MT Actions Photography.

Eric Foster with Toes in the Sand Productions is the Official Videographer for the race.

If your boat has changed significantly in the last year (for example, new boat or new paint/number) please email a side profile photo of your boat immediately to

epicmotorsportskyla@gmail.com

Regulations:

2014 APBA safety and general racing rules, U.S. Jet River Racing Series rules and U.I.M. Marathon jet river racing guidelines will be followed.

All in-boat competitors must be at least 18 years of age.

All in-boat competitors must have a full racing APBA membership if a legal resident/citizen of the United States of America; or have an APBA single event membership if not a legal resident/citizen of the USA.

Valid membership in the CBFNC for Canadians is reciprocated.

Single event APBA memberships will be available at registration.

All drivers must have a current medical physical either FAA Class 3 or DOT for US racers, a CBF medical for Canadian drivers, or a National Authority medical form for other countries (a copy of the same will serve the purpose for this event) (***see UIM Safety Rules 205. 01, 02, 03, 04***)

Motors of the 1st, 2nd and 3rd place boats in each class will be subject to tech inspections immediately after the last leg of the race. Please proceed to the Aqua Park Boat Ramp or in case of bad weather, Jack Buell Trailer Shop immediately after the last leg for inspection.

The winner for each jet class must have completed at least 75% of the race legs. For the overall award, the winner must have run 100% of the distance and race legs!

Race Fuel:

Race fuel will not be provided.

St. Joe Oil will take orders for barrel race gas and kerosene.

Drivers need to make their own arrangements for fuel.

Two-week notice is needed!

Please call (208) 245-2123 or (208) 245-2311.

St. Maries Municipal Airport has 100LL aviation gas available for purchase.

This is card service/self service facility open 24 hours.

The airport is located at 100 Airport Rd., St. Maries (just out of town on Hwy 3) about a mile and a half past St. Joe River Rd.

Covered Shop:

Randy Reynolds has graciously donated the use of his shop for racers to use before and during the race. Business phone (208) 245-5777, Home (208) 245-4795. Alternative phone: (208) 582-1276.

Protests:

All protests must be accompanied by \$500 and must be submitted to the Race Referee within 30 minutes from the last boat's finish time each day.

Do not speak to the scorers, timers or flaggers regarding your times or a penalty will result.

2014 Race Class Rules

BURLY RACING Unlimited Jet Class – 300 Series Numbers (U 300)

- * Hull any shape or material with a minimum length of 16 feet (4.88 m)
- * Unlimited engine restrictions or modifications, any exhaust c/w mufflers
- * Any engines not specified in Class Unlimited Piston (UP) or Class A
- * Propulsion – jet drive (Turbine engines, mufflers not required)
- * Roll Bar/Cage – well braced and mounted Chrome moly recommended

COORS LIGHT Unlimited Piston – UP Class – 300 Series Numbers (UP 300)

- Unlimited V8 automotive block class
- Hull any shape or material with a minimum length of 16 ft. (4.88 m)
- Any V8 engine not specified in Class A
- Oxygenated fuel allowed
- Canadian Spec. A in this class
- Any modification is legal including blowers, super chargers and turbos
- Propulsion – jet drive
- Any exhaust c/w mufflers
- Roll Bar/Cage (well braced and mounted) Chrome moly recommended
- If there are less than three (3) entries the class will be combined with Unlimited but scored separately

TRULINE RV - A Class – 200 Series Numbers (A 200)

- * Hull any shape or material with a minimum length of 16 feet (4.88 m)
- * Engine displacement shall not exceed 470 Cubic inches (770cc)
- * 454LSX engine in this class, stock crate engine GM LSX 454 part #19244611 (620 hp version). No modifications. There shall be no overbore, no sleeves, no grinding, no cutting, no filling, no milling, no porting, no balancing or engine modifications, no valve seat modifications, untouched factory heads only. Modified cooling systems allowed, air/water bleed ports can be added or enlarged with or without water pump. Any intake or fuel injection allowed, intake modifications allowed. Any carburetor (s) allowed. Any oil pan (no dry sumps or vacuum pumps allowed) any valve covers, any ignition or distributor. No oxygenated fuel. Repaired engine must use GM parts pertaining to that engine.
- * Older A, B and C engines in this class
- * Superchargers, blowers and turbos are allowed at 1.8 x cubic inch ratio
- * Engine shall use gasoline for fuel, any exhaust c/w with mufflers
- * Propulsion – jet drive
- * Roll Bar/Cage (well braced and mounted) Chrome moly recommended

ST. MARIES AUTO PARTS/NAPA CX Jet Class – 100 to 200 Series Numbers (CX 100 – CX 200)

- * Hull any shape or material with a minimum length of 16 feet (4.88m)
- * **Stock Crate Engine** shall be GM(LS3 Engines 376 cu, in.) 480, 515 or
- * Any cfm carburetor, or fuel injection engines with gasoline for fuel, normally aspirated only.
- * Stock crate intake manifold, no port matching on intake or heads, any valve covers
- * Repaired engines must use GM parts pertaining to that engine.
- * Any oil pan (no vacuum or dry sumps allowed), any ignition or distributor, any valve cover.
- * No overbore, no sleeves, no grinding, no cutting, no filling, no milling or porting, no balancing or engine modifications allowed, untouched factory heads only
- * Modified cooling systems allowed, air/water bleed ports can be enlarged or added, with or without water pump.
- * No oxygenated fuel allowed.
- * Any exhaust c/w mufflers “SPORADIC TESTING”
- * Propulsion – jet drive
- * Roll Bar/Cage (well braced and mounted) Chrome moly recommended

RIDDLE MARINE FX & FXV Jet Class – 01 to 99 Series numbers (FX 99) - - Crate Motor Class

- * Tunnel hull any shape or material with a minimum length of 16 feet (4.88m) or V bottom/ Step tech hull any shape or material with a minimum length of 13 ft. (3.96 m) No glass windshields.
- * Engine – GM ZZ4 355 HP CRATE engine (GMPP long block part number 24502609)
- * Engine repairs must meet OEM specifications & weights and use GM parts pertaining to that engine. No roller rockers allowed and no porting, balancing, port matching or modifications; no overbore allowed, no sleeves, no milling, no valve seat modification, untouched factory heads only.
- * Any ignition system, Any oil pan (no dry or vacuum sumps) any valve covers, Stock GM intake manifold “SPORADIC TESTING”
- * Carburetor – 750 cfm maximum & 1” spacer thickness maximum 3 gaskets (0.60)
- * Exhaust - any exhaust system allowed c/w mufflers
- * Engine shall use gasoline for fuel – No oxygenated fuel allowed.
- * Propulsion – jet drive
- * Roll Bar/Cage (well braced and mounted) Chrome moly recommended
- * V bottom only or no Step Tech or tunnel hulls, any shape or material with a minimum length of 13 feet (3.96m) No glass windshields.
- * Engines will include FX class GM ZZ4, FX class SPECS; Any stock 5.0 or less V6
- * Sport Jet engines will race in this class with the same hull restrictions
- * FXV will run with this class unless there are at least four FXV entries. FXV is a 65 mph class.

FX & FXV WILL BE COMBINED FOR RACE THE JOE! 2014

2014 U.S. Jet River Racing Series

Regulations:

1. UIM rules for Jet River Marathon Racing will apply unless there is a more restrictive APBA General Safety or General Racing rule.
2. Boat drivers and navigators must have an APBA membership either full year or single event. International drivers will have their National Authority membership plus a minimum of an APBA single event membership.
3. All racers must have a Boat Operators License from their respective state or province.
4. All racers must have a current medical physical either FAA Class 3 or DOT for US racers, a CBF medical for Canadian racers, or a National Authority medical form for other countries.
5. APBA/UIM Anti-Doping Alcohol rule in effect. Disqualification will be issued with a reading above **0.00** blood alcohol level. Any race or safety boat driver(s) and race officials must comply with APBA/UIM anti doping rules and regulations prior and during the event hours. Violation of this rule by any of the race driver(s) will result in the disqualification and or sanctions according to APBA/UIM Anti-Doping rules. For Race Official(s) they will be suspended from their duties for the remainder of the event. All drivers prior to the event must sign the Acknowledgement and Agreement letter. This ruling also applies to all participants in the designated hot pit area.
6. **Absolutely no image recording devices can be attached to helmets.**
7. Closed toe shoes must be worn in the hot pit area by participants.
8. The upper fifty percent of the helmet must be a solid color of orange, international orange, yellow, fluorescent red or fluorescent yellow/lime green. Green helmets are not legal. The wearer is entirely responsible for the efficiency of their helmet.
9. All race numbers must be 24 cm x 4 cm white on black, black on white or strongly contrasting color with 4 cm border.
10. All rotating parts must be guarded if reachable while belted into seats unless boat has a bulkhead.
11. No penalties for engine changes.
12. All race boats must have two rear view mirrors.
13. No black flags should be carried in any race boat.
14. GPS is allowed-Only small (maximum 5 inch screen or display / measured diagonally as originally manufactured) will be allowed. Mounted GPS must be in front of the navigator (facing the navigator) or if hand held must be under the control of the navigator at all times.
15. Fueling on an open leg is prohibited. Fueling while the boat is in the water is prohibited. A boat can only be fueled on the trailer 100 ft. from the water.
16. Any repairs to CX and FX class crate motors must use OEM parts. No over bores.
17. Any racers caught cheating on CX or FX motors will be disqualified for the entirety of the event.
18. For engine teardowns all gaskets at owner's expense.
19. All boats must be off step in the designated staging area.
20. Race fuel will not be provided.

21. In order to race all boats must be equipped with all items on the **attached checklist**.
22. Crew Assistance: during the time of a race leg is being raced, the race boats can be assisted by their crew to make any repairs on the boat and/or engine.
23. A Drivers Meeting will be held prior to each race leg of the race at the indicated time. If the race leg has time cuts, it will not be necessary to have a Driver's Meeting before each section, unless the Race Committee determines to be unnecessary. This will have to be indicated in the initial Drivers Meeting.
24. If the starting procedure is stopped for any reason, a red flag must be displayed by the Starting Officials at the Starting Line during all the time, the Race Director must be informed. When the racecourse is reopened, the racing starting procedure will be re-assumed within the next minute, and the procedure will be according to Rule 900.9.5 (a White Flag will be displayed for a minute and the last ten seconds a Green Flag will be raised). The boat, which was last in the staging area, last will then start, the Starting Officials will keep track of all the new starting minutes of the remaining race boats.
25. Roll Bar: All boats must have a well-structured steel chrome-moly or aluminum roll bar. It is recommended that they modify their roll bar into a roll cage or the structure of the hull conforms like a crash cockpit. It is also recommended that the steering wheel column be attached to the roll cage and/or to the structure of the hull. For 2015 all jet boats in all racing classes must have a roll cage and/or a well-structured crash cockpit. Refer to UIM Rule 900.15.2 for construction of roll bar/cage.
26. The time which will be given to boats which do not start (DNS) or to the boats which finish after the finish line is closed; or the ones that start and not finish (DNF), will be the time of the slowest boat of their class for that leg which finished within the allowed time, plus the time penalties calculated based on the following ADJUSTMENT FACTORS: DNF = x1.10, DNS = x1.30.
27. The minimum age for a crew member (driver or navigator) is 18 years old. A younger crew member (16 years or older) can race with written permission of their parents or guardians
28. The minimum age to be on a safety/rescue or sweep boat is 18 years old.
29. The life jacket and helmet must be worn by everyone in a race boat at all times while the boat is in motion under its own power, this implies during racing, testing or tuning. Violation of this rule will result in a fifteen minute penalty.
30. The crew of the boat must remain in their seats at all times during the race. It is not allowed for a member of the crew to be on the bow of the boat at any time during the race. Failure to abide by this rule will result in a penalty of fifteen minutes.
31. Scoring Points: The APBA/UIM points structure by order of finish is listed below:

First.....400	Sixth.....95	Eleventh.....23	Sixteenth.....5
Second...300	Seventh....71	Twelfth.....17	Seventeenth...4
Third.....225	Eighth.....53	Thirteenth.....13	Eighteenth.....3
Fourth....169	Ninth.....40	Fourteenth....10	Nineteenth.....2
Fifth.....127	Tenth.....30	Fifteenth.....7	Twentieth.....2

32. The procedure for compiling the USA-1 title is the team that accumulates the lowest time, in the same class, for all races in the season including penalties. The team must start at least the first leg of each event.

USA 1 Points Questions contact Larry Darneille (541) 479-0985.

2nd Annual Race the Joe! 2014 Race Officials:

APBA Referee	Rick Sandstrom
APBA Assistant Referee	Gary Labrum
Race Director	Shirley Ackerman
St. Joe Race Logistics Director	Dale Hill
Technical Inspector	Lucas Brecheisen
Chief Scorer & Media Director	Kyla Sawyer
CBF/APBA Scorer	Linda Doucette
Timers & Flaggers	Amy Reid-Scheer, Kristin Compton, Jenn Neff, Mark Chmielinski,
	Hayden Kraack
Computer Scoring	Tim Wilmot
Risk Manager	Doug Martin
Safety Boat Director	Terry Waddell
Emergency Medical Services Director	Deanna Wine
Communications Co-Director	Chuck Silvas
Communications Co-Director	Kevin Buell
Sweep Boat Captain	Eric Schurman

Race the Joe! 2014 Entry Form

Early Bird Registration \$300. Entry Form AND Entry Fee must be received by May 10.
Registration \$450, May 23 at Aqua Park, 2 p.m. - 5 p.m. at St. Maries, Idaho.

Mail: Epic Motorsports
Attn: Race the Joe!
P.O. Box 491
McCall, ID 83638

Or Scan completed Entry & Email to:
epicmotorsportskyla@gmail.com

****Checks payable to: St. Maries Chamber of Commerce**

JET CLASS: _____
FX/FXV CLASS ONLY - HULL TYPE: V-BOTTOM _____ TUNNEL _____

BOAT #: _____

BOAT
NAME: _____
HULL MAKE &
LENGTH: _____

ENGINE
MAKE: _____
ENGINE DISPLACEMENT/HORSE
POWER: _____

DRIVER
NAME: _____

ADDRESS: _____

CELL PHONE: _____ HOME PHONE: _____

EMAIL: _____

NAVIGATOR
NAME: _____

ADDRESS: _____

CELL PHONE: _____ HOME PHONE: _____

EMAIL: _____

AWARDS/HOW LONG HAVE BEEN
RACING: _____

Accommodations:

St. Maries

Motels and Bed & Breakfast Establishments

Birch Tree Bed & Breakfast	1 Jay Lane	(208)245-2198
Fort Hemenway Manor B & B	1001 Jefferson Ave.	(208)245-7979 www.forthemenwaymanor.com
The Guest House	112 – 6 th St.	(208)245-5755 or (208)245-3227
The Pines Motel	1117 Main Ave.	(208)245-2545 www.idahopinesmotel.com
Ponderosa Lane B & B	30 Ponderosa Lane	(208)245-6639 ponderosalanebb.blogspot.com
Rio Mirada Ranch B & B	3217 St. Maries River Rd.	(208)245-3276 www.riomiradaranch.com
River Front Suites	105 Main Ave.	(208)582-1724 www.riverfrontsuites.com
St. Joe River B & B	816 Shepherd Rd. FULL	(208)245-8687 www.stjoeriverbb.com
St. Maries Inn	331 College Ave.	(208)245-8710

Campgrounds

Cherry Creek RV Park	35 Upper Cherry Creek Rd.	(208)582-2560
Della Kennon (private)	near IFI Landing	(208)582-0825 2 full hook-ups, 5 acres
St. Joe Landing	10100 Railroad Grade Rd.	(208)245-6737 www.stjoelanding.com

House Rentals

Four Seasons Realty	834 Main Ave.	(208)245-6898 www.4seasonsrealty.com
St. Maries Realty	728 Main Ave.	(208)245-4502 www.stmareisrealty.com

Accommodation Information:

St. Maries Chamber of Commerce	906 Main St.	(208)245-3563 www.stmarieschamber.org
--------------------------------	--------------	--

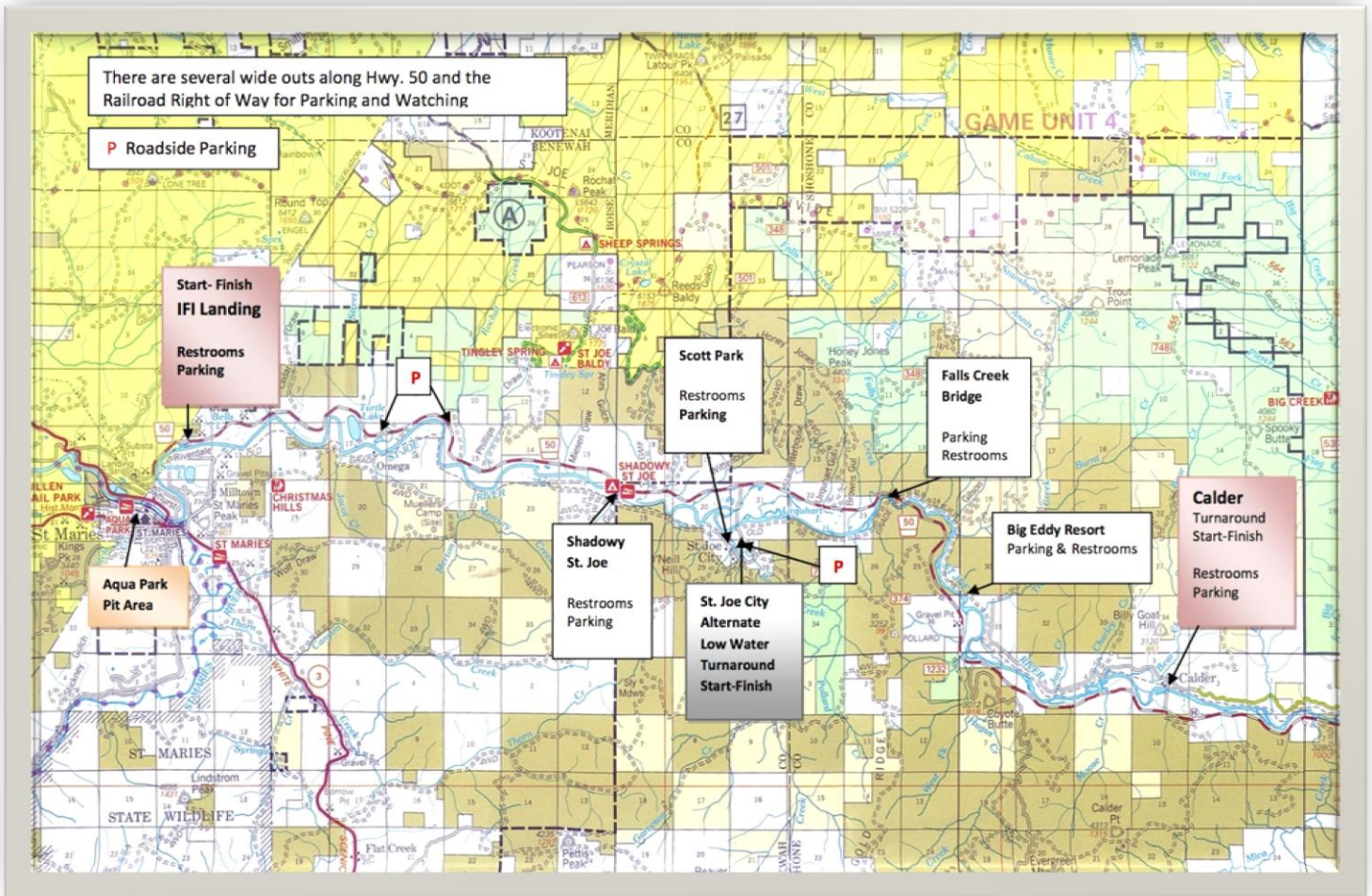
Near St. Maries

Cabins By the Joe	730 Old River Rd., Avery	(425)773-3724 www.cabinsbythejoe.com
Corskie House B & B in Harrison	114 N. Coeur d'Alene Ave.	(208)661-9989 www.corskiehouse.com
Scheffy's Motel & General Store	Avery, Idaho	(208)245-4410 scheffys@yahoo.com

Map:

Race the Joe! 2014 May 23-25 Race Course Map St. Joe River

Elevation: St. Maries, Idaho, 2127 ft.
Calder, Idaho, 2185 ft.



2014 US Jet River Racing Series

Race Boat Check List

(2) Paddles	
(1) 3/8" x 50' rope with attached hull/float device	
(1) 1/2" x 50' rope for towing	
(1) 16" x24" Red Flag	
(1) 16" x 24" Yellow Flag	
(1) First Aid kit	
(1) Tool Kit with Tools	
(2) 2.5 lb. Certified (1yr.) Fire Extinguishers (2) 5 lb. recommended on US boats	
(2) Racing Life Jackets C/W Leg Straps	
(2) Snell Rated Helmets, Upper Half Orange, Yellow, Fluorescent Red, Fluorescent Yellow/Lime	
Fuel Tanks Secured and Grounded	
Bulkhead/Guards (if rotating parts are reachable when belted in)	
Throttle Return Spring	
Blower Fan (Enclosed Engines)	
Whistle	
Bail Bucket	
Flame Arrestor / Air Breather	
Battery Disconnect-3" red triangle sign accessible to racing crew	
Fire Retardant Clothing	
Water Outlets- Horizontally or Downward	
Stop Watch	
Roll Bar (well braced)	
Steering Cables- center of hull or securely anchored	
Mufflers	
4 Point Seat Belts with quick release & tether connection between belt release	
Cutter for Seat Belts, taped to dash	
Engine Restraints-3 point mounts on pump	
(2) Mirrors (rear view)	
9" x 1.5" Boat Number/ Class Letters	
Boat Drivers License (National Authority)	
GPS Hand Held 5" Inch Screen, measured diagonally	